

Flat 3 6 Arnold Road, Whalley Range, Manchester, M16 8NQ

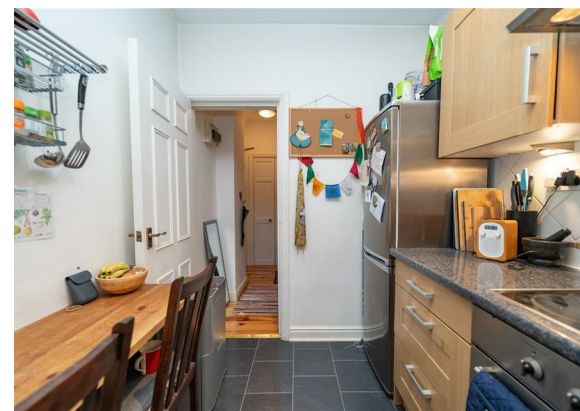


JP&Brimelow
ESTATE AGENTS

Offers In The Region Of £160,000

 1  1  1  c

****VIDEO TOUR AVAILABLE**** A cosy and well presented ONE DOUBLE BEDROOM first floor apartment set within this period, bay fronted residence. On a sought-after residential road off Wilbraham Road, on the borders of Chorlton and Whalley Range. Located nearby to good secondary schools, Whalley Range Cricket and Tennis Club. Close to Alexandra Park, Hough End Playing Fields and a ten-minute drive from Manchester City centre. This well-planned property consists of; an entrance hallway with storage, a fitted kitchen, a double bedroom and a three-piece modern bathroom. The property benefits from gas fired central heating and off road parking to the rear.





EPC Chart

Energy Efficiency Rating		
	Current	Potential
Very energy efficient - lower running costs		
(92 plus) A		
(81-91) B		
(69-80) C		
(55-68) D		
(39-54) E		
(21-38) F		
(1-20) G		
Not energy efficient - higher running costs		
England & Wales	EU Directive 2002/91/EC	



Tenure: **Leasehold** Council Tax Band: **A**

First Floor



JP & Brimelow Estate Agents Ltd
 430 Barlow Moor Road, Manchester, M21 8AD
 Tel: 0161 8822233
 E: sales@jpbrimelow.co.uk www.jpandbrimelow.co.uk



JP & Brimelow
 ESTATE AGENTS

NOTICE: JP & Brimelow Estate Agents Ltd for themselves and for the vendors or lessors of this property whose agents they are give notice that:

- (i) the particulars are set out as a general outline only for the guidance of intending purchasers or lessees, and do not constitute, nor constitute part of, an offer or contract;
- (ii) all descriptions, dimensions, references to the condition and necessary permissions for use and occupation, and other details are given in good faith and are believed to be correct but any intending purchasers or tenants should not rely on them as statements or representations of fact but must satisfy themselves by inspection or otherwise as to the correctness of each of them;
- (iii) no person in the employment of JP & Brimelow Estate Agents Ltd has any authority to make or give any representation or warranty whatever in relation to this property.

jpandbrimelowestateagents

@jpandbrimelow